



MASSEY FERGUSON

130 HP

# MF TELEHANDLER

MF TH 7038



# Raising the bar

**Massey Ferguson's TH 7038 telehandler is now upgraded with a number of new features to further improve productivity, ease of use and efficiency.**

Power and comfort are essential and this telehandler boasts impressive capabilities, whether you are moving bales or shifting feed. The TH 7038 also excels in loader operations where hydraulic flow is provided, as well as application requiring road transport with 40 km/h road speed.

This new model also offers essential and unbeatable visibility thanks to the new cab and the new engine basket design that allows the operator to work unhindered and in complete safety.

## Highlights

### 01 Quick hydraulic couplers

For fast, efficient and easy change of equipment with New Electric line on Boom for 4th and 5th electric function (optional) – see details p.8-9

### 02 Smart and powerful hydraulics

All models are fitted as standard with a load sensing valve block. Multiple functions can be done at the same time. Now with 190 L/min CCLS oil flow

### 03 Unbeatable lift capacity

From the high strength boom – with 7.0 m high and 3,800 kg (vs 3,500 kg on the previous MF 9000 range)

### 04 Efficient boom suspension and Cushion Retract

Boom suspension is available as an option on all models for maximum comfort in transport conditions. Cushion Retract is available as standard on all models for more comfort to the operator allowing the boom to retract smoothly by a reduced/controlled speed

### 05 Unbeatable comfort and visibility

The MF TH Series cab environment is equipped/fitted with the highest levels of comfort and controls, with maximum all-round visibility thanks to the curved shape of the cab and the new lowest engine bonnet design

### 06 New powerful and fuel efficient engines

130 HP for more productivity and performance with less downtime and low cost of operation. Easy access for daily maintenance and an automatic fan inverter option for greater reliability and durability – see details p.10

### 07 Three semi-automatic selectable steering modes

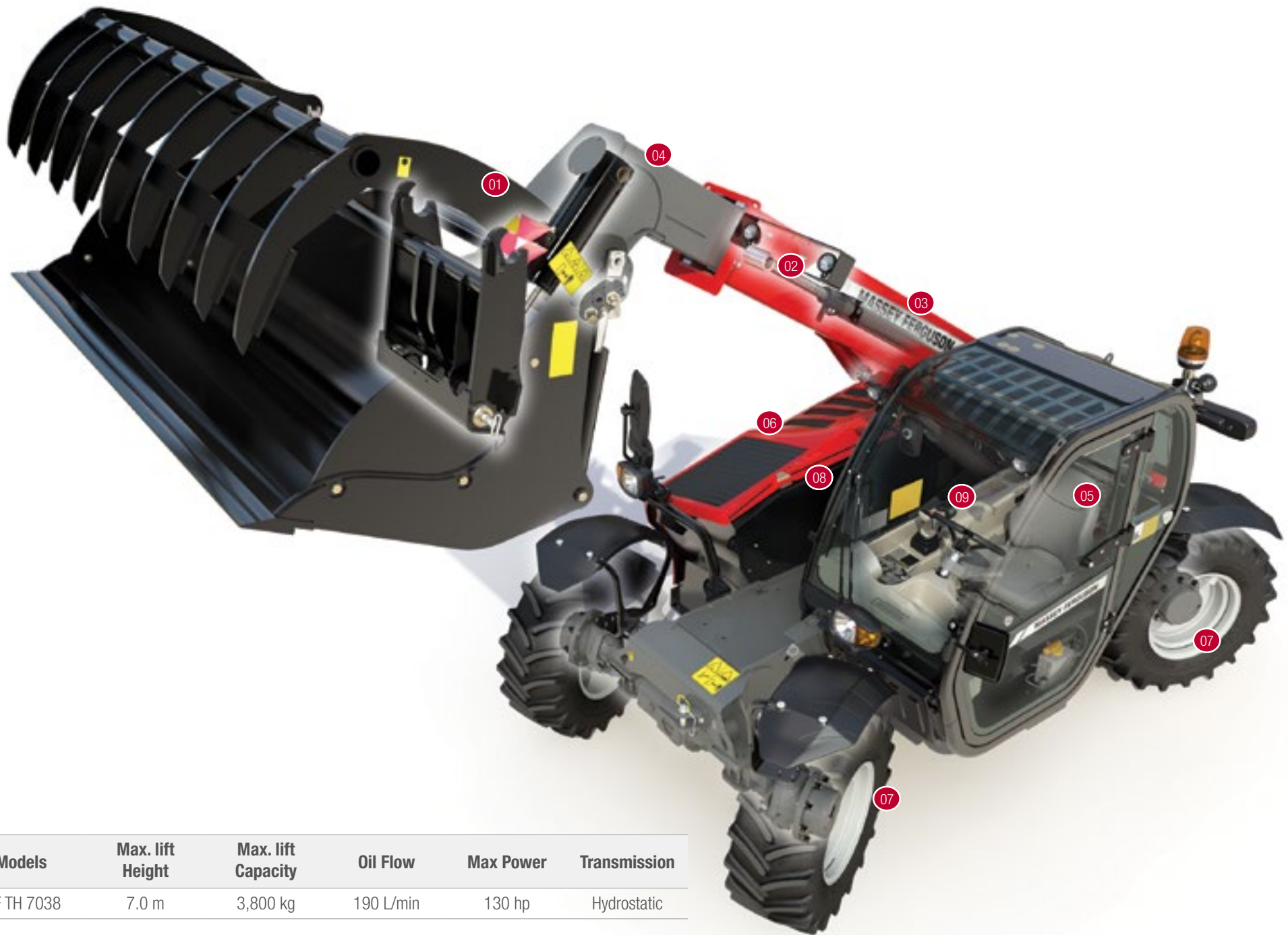
To provide optimum manoeuvrability in all operating conditions – see details p.4-5

### 08 Four-speed (2 mechanical x 2 hydraulic) hydrostatic transmission

Offers simplicity, smooth operation and best in class precision

### 09 Automatic Parking Brake

For increased safety and productivity



Models	Max. lift Height	Max. lift Capacity	Oil Flow	Max Power	Transmission
MF TH 7038	7.0 m	3,800 kg	190 L/min	130 hp	Hydrostatic



# Maximum productivity, agility and manoeuvrability

## Engineered power and energy

The new Massey Ferguson Telehandler is nothing short of impressive. With an engine horsepower of 130 hp, it has the power and endurance to tackle the toughest jobs when you need it most. The MF TH 7038 is a serious performer that will prove to be invaluable around the farm. Speed, agility and strength are just some of the key benefits that make this the ideal multipurpose workmate in all kinds of farming operations.

Handling jobs effortlessly and efficiently, the MF TH 7038 provides you with the optimum accessibility and manoeuvrability that you require. This machine also gives you more lift height, a longer reach and the ability to lift heavier payloads. With the right attachment, the MF TH 7038 can achieve outstanding performance in a wide variety of applications around the farm.

## Boom and chassis design

The new, slender chassis with a shorter overall length ensures stability and excellent manoeuvrability when you need it the most, as well as reassuring durability in the heaviest agricultural operations. A lower boom pivot allows unobstructed visibility around the entire machine, for safer, more productive operation.

Boom suspension is standard, which greatly increases operator comfort, for example, when towing a large trailer of straw at 40 km/h\* during road transportation.





## Steering functions

The TH 7038 has three selectable steering modes, two-wheel steer, four-wheel steer and crab-steer to provide optimum manoeuvrability in all operating conditions. Changing from one mode to another is very easy. Just pre-select the mode by pressing the switch in the cab and the mode will be engaged.



**Two-wheel steering mode**



**Four-wheel steering mode**  
– for minimum turning circles.



**Crab-steer mode**  
– for efficient filling and grading and working alongside walls and in confined spaces.



# Operator environment – productive, efficient and comfortable

Massey Ferguson cabins are renowned for excellence, and the MF TH 7038 follows that legacy. It's something we work hard for, so you can sit and reap the benefits when days are long, in a very productive environment that blends comfort and quietness, with ease of use and quality. We know that a more productive operator will create more profit for his business.

The new, curved shape cab design, the new engine bonnet lower profile and the low boom pivot point ensures unsurpassed visibility all around the machine, especially from the rear of the cab whilst working in tight and narrow spaces. An unobstructed view of front attachments ensures safe and precise loading and unloading, making it easier and safer to position bales or pallets at elevated working heights.

## Intuitive controls thanks to the Multifunction Joystick

The new multifunction joystick is close to hand, ensuring efficiency, quick and easy operation and total productivity. A digital display screen located on the dashboard shows valuable information such as maximum speed and flow of hydraulics, job hours, vehicle or engine speed, boom angle, speed management and auxiliary hydraulics.

The positioning of the joystick falls naturally to hand and incorporates all the main controls needed for operating the boom and attachments.

- 01 & 02** Dashboard display settings
- 03** Boom extended/retracted
- 04** 3rd function
- 05** Boom suspension
- 06** Forward, neutral, reverse selection



## Standard feature Eco mode

The operator can activate a new eco mode by just the flick of a switch in the cabin. Oil flow and engine RPM are managed in order to reduce fuel consumption.







## **An Operator area to increase comfort**

The superior operator environment consists of a spacious cab interior with excellent all-round operator visibility and a reduced noise level. The cab layout is extremely ergonomic; controls and instruments are easy to use and have been designed to help make applications easier to manage.



# Powerful and smart hydraulics

## Smart Handling

A powerful and consistent hydraulic system is paramount to the everyday productivity of a telehandler. There is a load-sensing spool valve management system on all models.

All functions are electro-hydraulic and proportional thanks to a load-sensing hydraulic system. It's very accurate and easy to use, plus it allows the operator to simultaneously use three functions, increasing productivity and reducing downtime.

There is market-leading flow of 190 L/min on the MF TH 7038.

The load-sensing pump that supplies 190 litres of oil per minute on the MF TH 7038, offers outstanding capabilities and performance, even at low engine speeds. Therefore, you can work at significantly lower engine speeds, consume less fuel and can count on remarkably shorter working cycles. The load sensing pump only supplies oil when hydraulic power is required. This prevents unnecessary oil-heating and power loss. If required, the full oil volume is available immediately.





High spec boom controls, thanks to 4 electro hydraulic load sensing spool valves, will allow the operator to simultaneously use 3 functions with high precision. The oil goes exactly where the operator wants it to go, it does not simply go where it's easy. Optional boom suspension also provides outstanding comfort for all transport applications. Cushion Retract is now fitted to the boom, ensuring a smoother action and prolonging the life of the components.

**Standard feature SHS (smart handling system)**

From the new display menu, the operator will be able to set the max hydraulic flow available. By adjusting the max flow, the machine can be much smoother and more accurate.



Integrated, pressure-release quick couplers are conveniently mounted on the boom head for fast, efficient and easy coupling and uncoupling of implements.



Connecting and disconnecting is simple thanks to the connector block and its pressure release system. For more demanding implements such as straw choppers and feeding buckets an electric line can be specified, giving a fourth and fifth service.

# Smart generation of cost effective power

Thoughtful engineering and design means that you receive the best features within the MF TH Series telehandler. Powerful, efficient engine, high-performing transmission and precision hydraulics, guarantee a trustworthy ally for many of the jobs you need to get done quickly on the farm.

## Engine Highlights

- ▶ Powerful and efficient with ECO Mode
- ▶ The engine remains parallel to the boom, providing excellent access for inspection of the engine bay area and improved right-hand side visibility
- ▶ Straightforward technology for a more productive working day
- ▶ Optional automatic fan inverter for easy cooling package cleaning and optimum productivity



### Automatic fan Inverter

A proven feature from the previous MF Telehandler generation is now available with an automatic option to keep the engine clean for maximum efficiency. It offers speed regulation depending on air temperature or working at a pre-set speed, with automatic mode selected via a button on the dashboard.



### Standard feature ECO mode

The operator can activate a new ECO mode by just the flick of a switch in the cabin. Oil flow and engine RPM are managed in order to reduce fuel consumption.



A new engine installation and basket design has lowered the height of the engine for improved right hand side visibility. With a reinforced bonnet and bigger opening, the MF TH 7038 also benefits from a new bonnet opening handle system.







# Smooth operation from the hydrostatic transmission

The two speed hydrostatic gearbox offers simplicity and smoothness of operation as well as high-performance output and capability. It has speed capabilities of up to 40 km/h\* with two mechanical gears with two hydraulic speed ranges which allows the customer to choose the best speed for the application and gives excellent performance in road transport.

It also has an easy-to-set creeper function for operations that demand low speed at higher engine revs. This feature provides more accuracy and control for operation such as sweeping, silage distribution, and straw spreading.



## Transmission Highlights

- ▶ Hydrostatic transmission allows very accurate and very smooth control and operation of the machine
- ▶ Unique 4 speed (2 mechanical x 2 hydraulic) allows the operator the most accurate control during material handling
- ▶ Choose the best ratios for ergonomic control of the machine
- ▶ Excellent road performance thanks to two mechanical gears

\*Dependent on market-specific legislation



# Servicing made easy

## Less downtime – more work done

Fast, Straightforward and easy routine maintenance. Servicing is straightforward and simple thanks to well positioned service points, taking the stress out of maintaining your telehandler and leaving you with more time in the field/at work.



Side opening of the bonnet gives you wide, open access to the engine, air filter, cooling system and air conditioning system; providing quick serviceability to all the major points.



From ground level, you can easily lift the hood to check the engine and radiator. All routine engine, hydraulic and transmission service points are easily located for fast and simple maintenance, keeping downtime to a minimum.

# Specifications as standard

<b>Loader performance</b> (norm EN 1459: 1998 Annex B)	<b>MF TH 7038</b>
<b>Max. lift capacity</b>	
at ground level kg	3,800
at full lift height kg	3,800
at load configuration 2 m length @ 4 m height kg	3,000
Breakout force kN	6,200
Max. lift height m	7
Forward reach - boom extended m	4
<b>Hydraulic system</b>	
CCLS Pump Capacity (L)	190
<b>Transmission</b>	
Type	Hydrostatic
Mechanical gears	2
Hydraulic speeds	2
1st gear speed* km/h	6
2nd gear speed* km/h	12
3rd gear speed* km/h	18
4th gear speed* km/h	40
<b>Engine</b>	
Capacity/no. cylinders litre/no.	4/4.4
Injection	Common rail
ISO hp @ 2400 rev/min	130
Max. torque (ISO 14396) Nm	510
Fuel tank capacity	138
<b>Tyres</b>	
Standard	460/70R24
<b>Brakes</b>	Oil immersed
	40km/h: Front axle and rear axle
<b>Weights and capacities</b>	
Weight, without implement kg	7130

\* with max speed specified machine

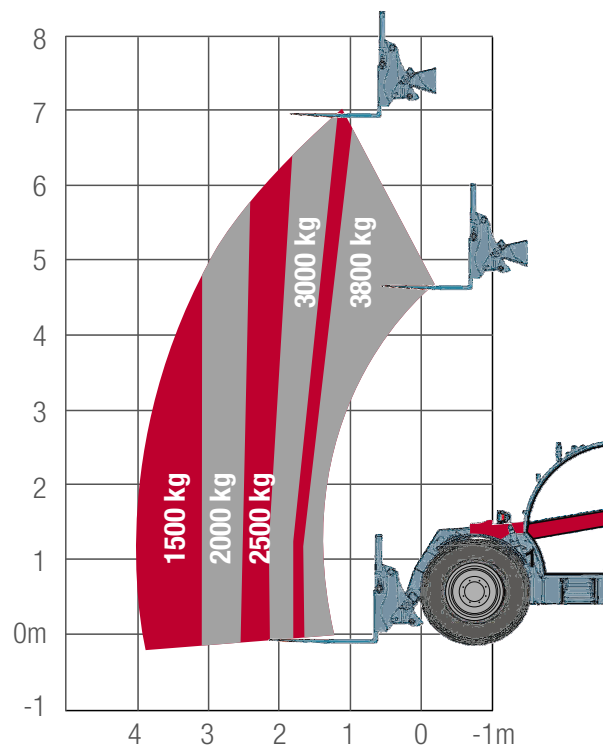
<b>Hydraulics</b>	<b>MF TH 7038</b>
All hydraulic function proportional and electro hydraulics	●
Boom 3rd function with adjustable Flow	●
Hydraulic implement attachment	●
Cushion retract	●
Smart Handling System (SHS)	●
<b>Transmission</b>	
Hydrostatic	●
Inching pedal	●
Speed Control System	●
Electric Parking Brake	●
<b>Engine</b>	
ECO Mode	●
Automatic isolator switch	●
Cyclonic air pre-filter	●
<b>Cab</b>	
Premium air pneumatic seat	●
Working lights	●
Aerial speakers & antenna	●
Rotating beacon & Back Up alarm	●
<b>Steering</b>	
Three steering modes with automatic alignment	●



# Lift capabilities

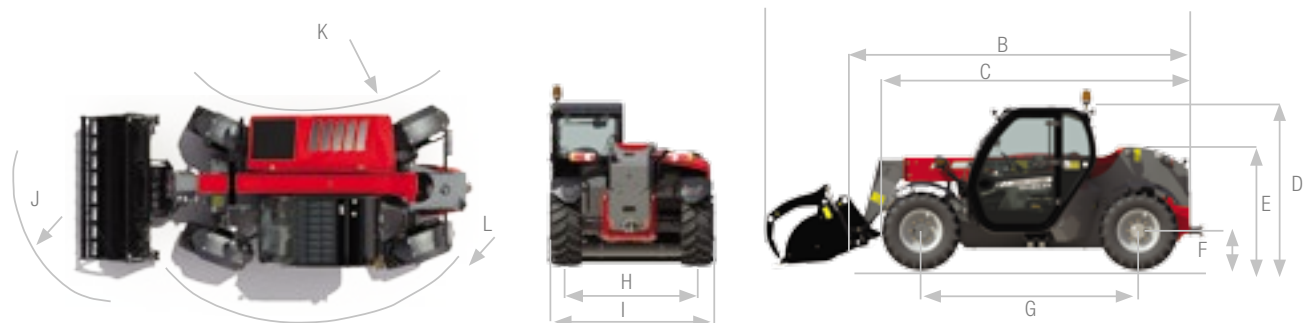
These load capacity illustrations clearly show that each model offers outstanding lift performance in its respective class.

## MF TH 7038



## Dimensions

		MF TH 7038
A	mm	6074
B	mm	4869
C	mm	4145
D	mm	2374
E	mm	1752
F	mm	560
G	mm	2870
H	mm	1895
I	mm	2300
J	mm	4970
K	mm	1161 - 1631
L	mm	3714 - 4192





**MASSEY FERGUSON**

A world of experience. Working with you.



[facebook.com/MasseyFergusonGlobal](https://facebook.com/MasseyFergusonGlobal)

[twitter.com/AGCOcorp](https://twitter.com/AGCOcorp)

[youtube.com/MasseyFergusonVideo](https://youtube.com/MasseyFergusonVideo)

[blog.agcocorp.com](https://blog.agcocorp.com)

Every effort has been made to ensure that the information contained in this publication is as accurate and current as possible. However, inaccuracies, errors or omissions may occur and details of the specifications may be changed at any time without notice. Therefore, all specifications should be confirmed with your Massey Ferguson Dealer or Distributor prior to any purchase.



**MASSEY FERGUSON** is a worldwide brand of AGCO.



**MASSEY FERGUSON**