

8000 Series Drill

8000 Series Drill



MODEL NO.	WIDTH OF CUT	
	Metres	Feet
8010L	1.6	5'3"
8013L	2.0	6'5"
8016L	2.4	7'10"
8019L	2.8	9'4"
8022L	3.3	10'10"



SPECIFICATIONS	8010L	8013L	8016L	8019L	8022L
No of Rows	10	13	16	19	22
T/port Width	m 1.8	2.4	2.8	3.2	3.7
	ft 6'0"	7'9"	9'2"	10'8"	12'2"
Linkage Attach	Category 2				
Hopper Capacity					
Seed	m ³ .18	.23	.29	.35	.41
Seed (wheat)	kg 142	185	230	280	330
Fertilizer	m ³ .18	.23	.29	.35	.41
Fertilizer (super)	kg 204	265	335	400	470
Ranks of Tynes	3				
Row Spacing	150mm (6")				
Tyne Type	25mm (1") Square Coil Tyne				
Points	Cast Baker Points				
Coulters	Standard 340mm (13 ³ / ₈ ")				
Seed Metering	Three row fluted rollers with restrictors for low sowing rates Infinitely variable speed drive Sowing rates from 1kg/ha - 240kg/ha (dependent on seed type)				
Fertilizer Metering	Pegged tooth rollers Infinitely variable speed drive Sowing rates up to 320kg/ha				
Standard Wheels	6.95s 14 (6ply)		195R 14LT (8ply)		
Hydraulic Equipment	N/A on linkage machines 8" stroke cylinder on trailed machines				
Walkway Kit	Standard				
Electronic Hectare Meter	Standard				
Weight Approx.	kg 740	1240	1475	1615	1860

OPTIONS		
Code	Description	
T	Trailed Hitch Kit	(Add T, delete L)
DC	Less Coulters	



 Proudly manufactured in Australia by CSN
Share Street, Kilkenny, South Australia 5009
ABN 27 007 871 472

 Telephone: **08 8268 9555**
Facsimile: **08 8268 4099**
Web Site: **www.johnshearer.com.au**

YOUR CSN - CONNOR SHEA DEALER:

Because of our continuing development programme, CSN reserves the right to make changes in the specifications at any time without notice. Please refer to your dealer for current specifications.

**THE RIGHT MACHINE
TO INCREASE THE
CARRYING CAPACITY OF
YOUR PASTURE LAND**



8000 Series Drill

The Connor Shea Pasture Drill has a long standing reputation in the farming community going back many years . . . the name is synonymous with the successful establishment and renovation of pastures and thriving coarse grain crops.

Today the latest 8000 Series Drill continues to provide Farmers with a reliable and effective machine with which to maximise seed germination and returns.

1 BAKER BOOT

Every machine is equipped as standard with the famous baker point which is the key to maximising seed germination and ongoing plant survival. Machines come complete with sowing boots and down tubes.

2 DRIVE SYSTEM

The simple and efficient friction drive system eliminates the need to use high wearing components such as chains and sprockets and provides a positive drive through to the gearbox.

3 COULTERS

The coil tyne coulters drill is fitted as standard with 340mm (13 3/8") coulters to provide the maximum efficiency when slicing through pasture mat in a pasture renovation programme. Coulters are mounted on their own separate frame, which is easily adjusted for height or removed completely.

4 GEARBOX AND ADJUSTABLE GATES

The 8000 Series Drill is equipped with an oil bath gear box which is designed for the most rugged of operating conditions. It provides easy and simple adjustment of rates of seed and fertilizer through an infinite adjustment system which can provide, for example, sowing range of seed from 1kg per hectare to 240kg per hectare. The adjustment system is located toward the front of the machine on the left hand side and is a simple screw adjustment. The gate adjustment is also located to the front of the machine on the left hand side and allows for enormous variety of seed usage and also provides for easy cleanout of the machine at the completion of its use.

5 LIDS

Dual large hoppers are provided for less downtime. Each hopper is equipped with a wide opening lid for easy loading. A separate lid for each hopper also minimizes spillage of material from one hopper to another.

6 TRAILING HITCH

Optional trailing hitch complete with adjustable jack is available to suit all models. This is the preferred option for larger size 19 and 22 row models.

7 LOADING PLATFORM

Solid wide loading platforms are provided with each drill for operator safety and ease of loading.

8 DISTRIBUTION SYSTEM

The rear hopper is designed for seed application and is equipped with triple fluted rollers which come complete with restrictors. The front hopper is designed for fertilizer so as to provide maximum penetrating weight for operation of the machine. The fertilizer hopper is equipped with the more aggressive peg tooth rollers. The triple fluted rollers in the seed hopper are able to handle small grass seeds through to large legumes.

9 MONITORING SYSTEM

Every 8000 Series Drill is provided with an electronic monitoring unit which monitors the drive shaft performance as well as the hectaremeter function.

10 INSPECTION PORTS

Inspection ports are fitted to the front and rear hoppers to provide the operator with a visual indication of the amount of material that is still available in the hoppers.

11 TYNE SPACING

The 8000 series drill has three ranks of tynes and a sowing row spacing of 150mm (6"). Spacing between the tyne mounts provides for the maximum available trash flow, while the 150mm row spacing can assist with the establishment of denser pastures.



THE RIGHT MACHINE TO INCREASE THE CARRYING CAPACITY OF YOUR PASTURE LAND AND PROVIDE VERSATILITY WITHIN MOST FARMING PRACTICES



1



2



3a



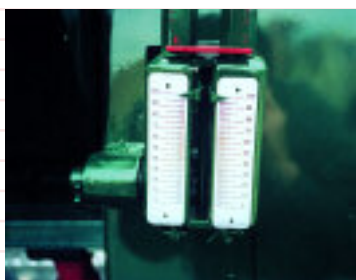
3b



4a



4b



4c



8



9



10



5



6



7



11