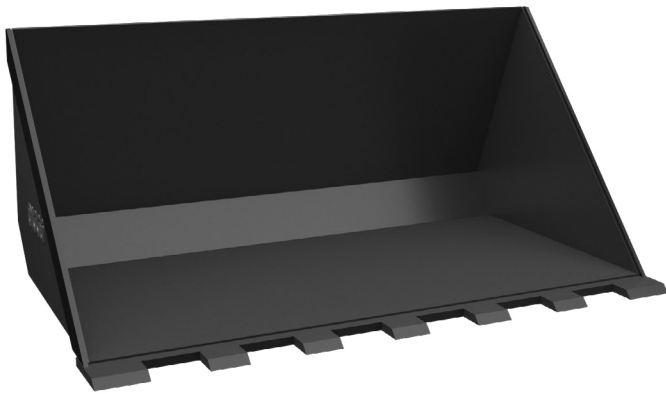


MINI GP BUCKET TO SUIT MINI LOADERS

DIGGA



Digga's Mini GP Bucket is Australian designed and manufactured specifically for mini loaders. The robust construction is designed with strength and durability in mind and is an essential addition to any mini loader.

The Mini GP Bucket is built tough and is able to handle a wide range of tasks, turn your mini loader into the model of efficiency and use the power of your machine to carry out an array of task from material handling, leveling, digging or grading. The Mini GP Bucket will do it all, with the addition of optional tooth edge design adds even more versatility and power. 900mm, 1050mm and 1200mm sizes available.

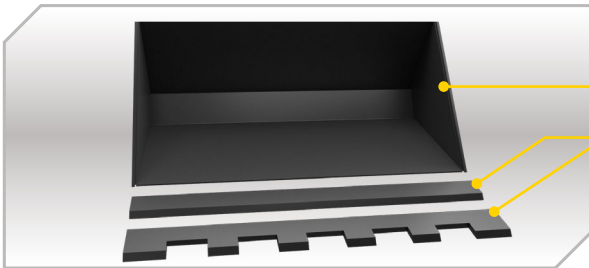
Machine Suitability:

Stand-on Mini Loaders and Small Skid Steer Loaders.



■ OPEN FACE DESIGN

Ideal for everyday use. The open face design prevents sticky material from clogging the bucket.



■ HEAVY DUTY COMPONENTS

- Heavy duty body with 12mm thick front edge.
- Straight Edge or Tooth Edge options available.
- Reinforced pickup.



■ AUSTRALIAN MADE QUALITY

The Digga Mini GP Bucket is made right here in Australia from quality materials. Digga is a proud Australian manufacturer committed to keeping jobs in the country.

ALSO AVAILABLE



**Mini
4 in 1
Bucket**



**Mini
Mulch
Bucket**

| SPECIFICATIONS: | 900 | 1050 | 1200 |
|---------------------------------|-------|-------|-------|
| Bucket Width | 900 | 1050 | 1200 |
| Weight (kgs) | 50 | 56 | 62 |
| Struck Volume (m ³) | 0.080 | 0.094 | 0.107 |
| Heaped Volume (m ³) | 0.104 | 0.124 | 0.142 |

NOTE: DIGGA MINI GP BUCKETS ARE NOT CERTIFIED AS A MEASURING DEVICE